

# DropMaster



**Microscopic Contact Angle Meter**

Contact Angle & Surface Free Energy

**MCA-4**

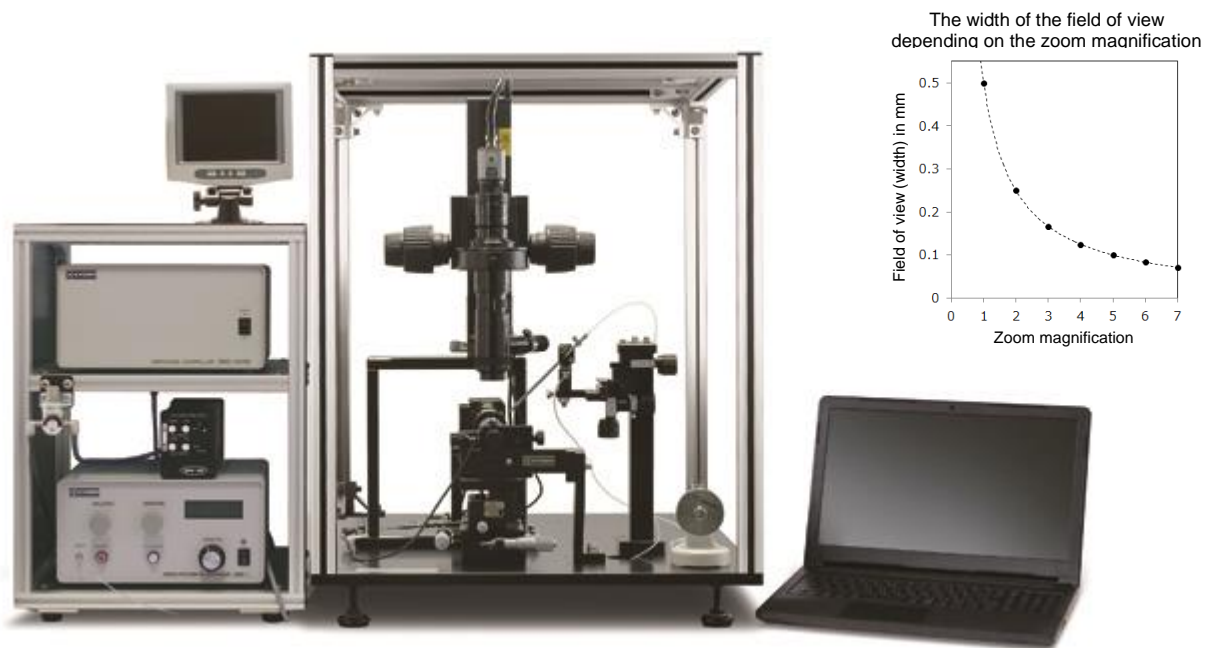
# Wetting behavior in nanotechnology

Due to technological development, the design patterns on silicon wafers and glass panels have become increasingly miniaturized. Therefore, we developed our Microscopic Contact Angle Meter MCA to support the increasing demand for studying the wettability of nanoscale areas.

With the development of a unique capillary with an inner diameter of only 5  $\mu\text{m}$ , it is possible to generate droplets with a volume as low as 10 pL on micro-areas within the width of 100  $\mu\text{m}$ . In addition, using high-quality optical components assures the precise measurement of contact angles even at high magnifications.

The top-view camera monitors the surface of the solid substrate and the capillary's tip. That allows depositing tiny droplets with pinpoint accuracy onto small microelectronic components, micro-grooved surfaces, or single fibers.

The sophisticated technology of our MCA-4 offers reliable measurements of contact angles with high reproducibility.



## Features

- Automatic recognition of drop deposition by FAMAS analysis software
- The top view camera allows for the deposition of droplets with pinpoint accuracy and observation of the spreading of micro-droplets
- The high magnification lens and a 12-fold zoom provide a field of view from approximately 75 x 56  $\mu\text{m}$  to 910 x 680  $\mu\text{m}$
- Fine adjustable micro stage in x-, y- and z-axis for exact positioning
- Fast image capture system with max. 2,700 fps allows accurate measurements of even quick evaporating picoliter droplets
- Droplet calibration standard bearing three sets of one full circle for calibration and three droplet silhouettes of 5°, 60°, and 108° for periodic inspection of measurement accuracy

## Applications

- Miniaturized patterns on silicon wafers, OLED panels, electronic components, printed circuit boards, etc.
- Wettability of thin wire materials such as single fibers, hairs, filaments, etc.
- Defined locations on the surface of tiny samples
- Inks at a small droplet volume (emitted from an ink-jet head)
- Other or micro-structured areas where conventional methods and droplet volume are not applicable

# Measurement



The MCA-4 utilizes a precise electric micro-injector system and a high-quality optical system for accurate contact angle measurements of micro-droplets on small surface areas of only 100 x 100µm.

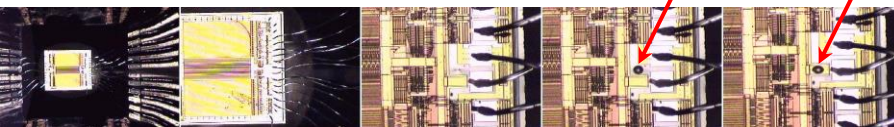
The unique capillaries with three different inner diameters allow dispensing micro-droplets from about 10pl to 1nL with high reproducibility.

This state-of-the-art system has an additional top-view camera that enables not only the deposition of droplets with pinpoint accuracy but also the observation of the three-phase line and the spreading of tiny droplets on solid surfaces.

■ Hard drive read-write head

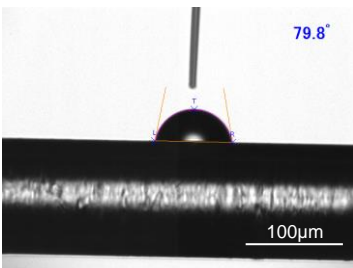


■ ROM circuit



■ Example of Measurement

Contact angle measurement of a water droplet on a human hair.



■ Example of Observation

Observation of the wetting condition inside cells of an OLED panel concerning homogeneous three-phase lines of water droplets.

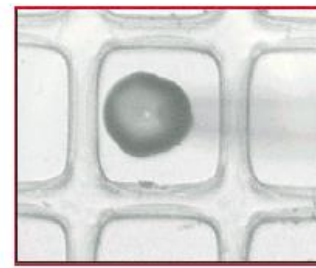
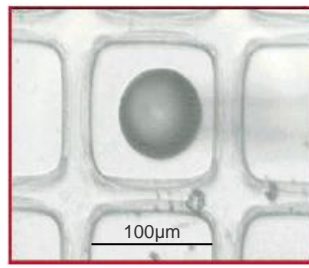
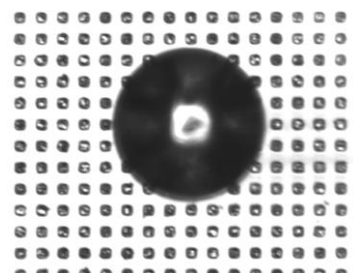
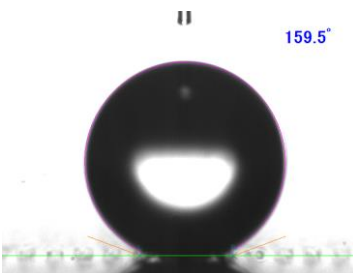


Image showing a homogeneous three-phase line

Image showing an inhomogeneous three-phase line

■ Contact angle measurement and top-view observation of a 1.7nL water droplet on a superhydrophobic pillar surface



# Analysis System FAMAS

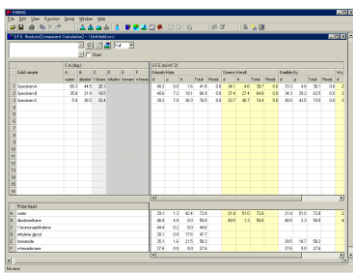
■ Measurement of Contact Angles

The analysis software FAMAS enables highly reliable measurements of contact angles using different methods such as  $\theta/2$  (height-width), tangent, ellipse & circle fitting.

The focusing aid with an index graph and the value displayed in the image screen helps operators achieve perfect focus. In addition, the black & white threshold level to determine the binary image before and after measurement helps to optimize droplet analysis.

The spreadsheet-like table displays measured results for easy reference and comparison, and a movie converter converts measurement data images to MPEG or AVI movie formats.





## ■ Analysis of Surface Free Energy of Solids

Solid surface free energies and their polar and dispersive components are analyzed using contact angle measurements with different probe liquids.

The software provides theories from different authors such as Geometric mean, Harmonic mean, acid-base, Interaction analysis (Work of Adhesion, Interfacial Free Energy), Young-Dupré, and Zisman plot.

An optional kit with five probe liquids and a set of needles is available to quickly start measurements of surface free energies according to the desired theory.

## Specifications

<b>MCA-4</b>	
Camera system	USB 3.0 CMOS camera with: 400 fps at 640x480 pixels 500 fps at 640x400 pixels 1000 fps at 640x200 pixels 2700 fps at 640x64 pixels
Optical system	Primary magnification (PMAG): 5.3 to 64 times (manual focus with a 12-fold zoom lens) Field of view: 75 x 56 $\mu\text{m}$ to 910 x 680 $\mu\text{m}$ $\pm 5\%$
Measuring methods	Sessile drop
Analysis methods	Contact angle: $\theta/2$ (height-width), Tangent, Curve fitting (ellipse, circle), Young-Laplace Surface free energy of solids: OWRK, Owens-Wendt, Kaelble-Uy, Kitazaki-Hata, Wu, acid-base, Zisman
Measuring range	0 to 180 ° (depending on the sample and environmental conditions)
Display resolution	0.01 °
Sample stage size (WxD)	50 x 25mm
Stage travel range	X-axis: 25 mm by manual micrometer Y-axis: 25 mm by manual micrometer Z-axis: 15 mm by manual micrometer
Approximately droplet size	Diameter: above 40 $\mu\text{m}$ Volume: 10 $\mu\text{l}$ to 1 nL
Measuring temperature	Standard: Ambient Option: Jacket type temperature-controlled (+10 to +60 °C)
Dimensions (WxDxH)	Main instrument: 550 x 620 x 700 mm Controller rack: 420 x 320 x 323 mm Installation area: 1000 x 650 x 720 mm
Approximately weight	Main instrument: 50.0 kg Controller rack: 15.0 kg
Utilities	Clean, dry, and oil-free pressurized air or N <sub>2</sub> gas at 0.4 to 0.7 MPa
Power supply	AC 100 to 240 V, 5.0 A, 50/60 Hz
Operating environment	Temperature: +10 to +35 °C, humidity: 30 to 80 %RH (non-condensing) Positioned away from sources of electrical noise and vibration

## Standard Components

- The main instrument is composed of horizontal & vertical camera assembly, LED light source, manual micro-positioning sample stage, micro-manipulator, micro-dispenser system, and control box
- Analysis software FAMAS
- Standard accessories: 2 sets of capillaries (25 pcs. each)  
1 droplet calibration standard for calibration and periodic inspections

For detailed information, please get in touch with our sales partner or us directly at +81-48-483-2629 or [overseas-sales@face-kyowa.co.jp](mailto:overseas-sales@face-kyowa.co.jp).

Specifications and designs are subject to change without notice.

2308



<http://www.face-kyowa.com>

Kyowa Interface Science Co., Ltd.

5-4-41 Nobitome, Niiza-City, Saitama 352-0011, Japan

Tel.+81-48-483-2629 Fax.+81-48-483-2702